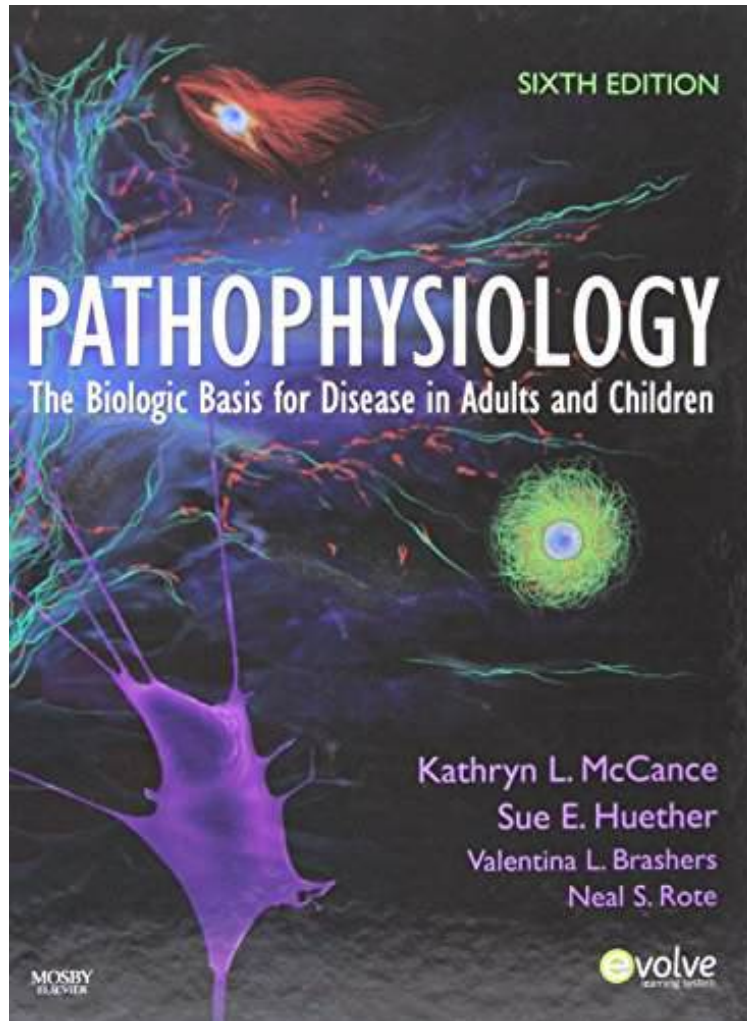


[PDF] Pathophysiology - Text and Study Guide Package: The Biologic Basis for Disease in Adults and Children, 6e

Pathophysiology - Text and Study Guide Package: The Biologic Basis for Disease in Adults and Children, 6e

By Kathryn L. McCance RN PhD, Sue E. Huether RN PhD
ebooks | Download PDF | *ePub | DOC | audiobook



[Download](#)

[Read Online](#)

| #968492 in Books | Mosby | 2009-12-23 | Ingredients: Example Ingredients | Original language: English | PDF # 1 | 3.10 x 8.80 x 11.10l, 8.73 | File type: PDF | 1838 pages | File size: 49.Mb

By Kathryn L. McCance RN PhD, Sue E. Huether RN PhD : Pathophysiology - Text and Study Guide Package: The Biologic Basis for Disease in Adults and Children, 6e professional medical textbooks for the medical dental veterinary nursing and other health professional fields free ups shipping on all orders express helpline get answer of your question fast from real experts Pathophysiology - Text and Study Guide Package: The Biologic Basis for Disease

in Adults and Children, 6e:

1 of 1 review helpful well written book By Sharon Labrocca The size of the book is intimidating at first The pages are very thin and words small but that s because the book is full of great pertinent information Sometimes when I read thesetextbooks I feel like the authors are trying to show how scholarly they are almost boasting knowledge by using too many big descriptive words That is not the case with this text I This money saving package includes the 6th edition of McCance s nbsp Pathophysiology The Biologic Basis for Disease in Adults and Children textbook and study guide

[PDF] make a refundable deposit express helpline

pdf audiobook professional medical textbooks for the medical dental veterinary nursing and other health professional fields free ups shipping on all orders

textbooks review express helpline get answer of your question fast from real experts

summary

Related:

[Genes and DNA: A Beginner's Guide to Genetics and Its Applications](#)

[The Crucible of Race: Black-White Relations in the American South since Emancipation](#)

[Leman Patterns of Human Growth \(Cambridge Studies in Biological and Evolutionary Anthropology\)](#)

[Robbins & Cotran Pathologic Basis of Disease, 9e \(Robbins Pathology\)](#)

[Robbins and Cotran Pathology Flash Cards, 2e \(Robbins Pathology\)](#)

[Human Genes and Neoliberal Governance](#)

[A Statistical Approach to Genetic Epidemiology: Concepts and Applications](#)

[The Genetics of the Silkworm](#)

[Clinical Pathophysiology Made Ridiculously Simple](#)

[Leman Mosby's Pathophysiology Memory NoteCards: Visual, Mnemonic, and Memory Aids for Nurses, 2e](#)