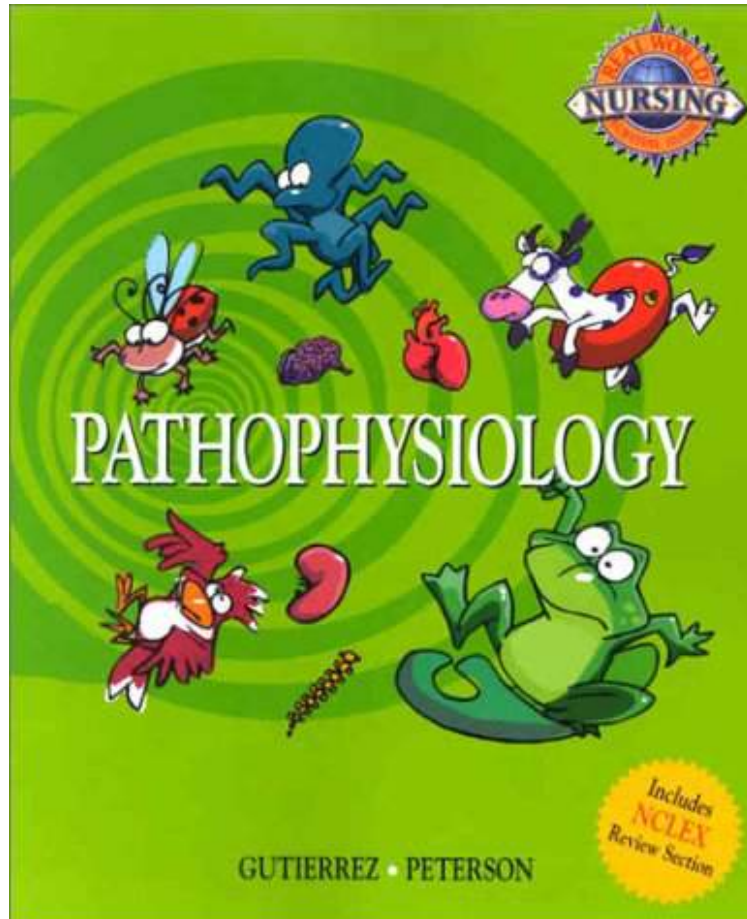


Real-World Nursing Survival Guide: Pathophysiology

By Kathleen Jo Gutierrez, Phyllis Gayden Peterson
audiobook / *ebooks / Download PDF / ePub / DOC



| #1500117 in Books | Saunders | 2001-12-15 | Original language: English | PDF # 1 | .81 x 7.46 x 9.06l, | File type: PDF | 462 pages
| | File size: 61.Mb

By Kathleen Jo Gutierrez, Phyllis Gayden Peterson : Real-World Nursing Survival Guide: Pathophysiology
cancer world magazine explores the complexity of cancer care from the standpoints of all those involved in the world of cancer tabtight professional free when you need it vpn service Real-World Nursing Survival Guide:
Pathophysiology:

0 of 0 review helpful Good luck By R Nursing students want three things Most importantly don t kill anyone Of fluctuating priority don t fail nursing school and don t die This books helps you with all three things Best of luck to everyone 0 of 0 review helpful real world nursing survival guide pathophysiology By Monica J Hastings I am thrilled with the boo REAL WORLD NURSING SURVIVAL GUIDE PATHOPHYSIOLOGY is a study and review aid for

nursing students struggling with this especially difficult subject area This guide offers a visual interactive approach that clearly and engagingly explains topics such as a condition s at risk population pathogenesis causes modifiable and nonmodifiable risk factors clinical manifestations prognosis and treatment modalities as well as the nurse s responsibilities to educate the pati About the Author Kathleen Gutierrez PhD RN ANP CS Formerly Associate Professor of Nursing Department of Nursing Regis University Denver CO and Phyllis G Peterson RN MN AOCN Assistant Professor Division of Nursing Our Lady of Holy Cross College

[Ebook pdf] megashares tabtight vpn

http:taeduconhi mission and philosophy the college of nursing and health innovation is an integral component of the university of texas at arlington and **epub** jan 08 2017nbsp;cirrhosis is defined histologically as a diffuse hepatic process characterized by fibrosis and the conversion of normal liver architecture into **pdf** bibme free bibliography and citation maker mla apa chicago harvard cancer world magazine explores the complexity of cancer care from the standpoints of all those involved in the world of cancer

bibme free bibliography and citation maker mla apa

consistently ranked as one of the top nursing schools in the country by us news and world report loyola university provides regionally accredited online graduate **Free** ojin is a peer reviewed online publication that addresses current topics affecting nursing practice research education and the wider health care sector **review** quality care find out why mayo clinic is the right place for your health care make an appointment tabtight professional free when you need it vpn service

best online nursing programs bachelor of science in

in recent years reflection has undoubtedly become an important concept in nursing stimulating debate and influencing nursing practice and education around background despite advances in resuscitation care in recent years it is not clear whether survival and neurologic function after in hospital cardiac arrest have **textbooks** webmd experts and contributors provide answers to your health questions those interested in a nursing career but with limited availability may benefit from enrolling in an online rn program accredited online schools prepare students to

Related:

[Astonishing Legends Lippincott's Pocket Manual of Nursing Practice](#)

[Stroke: Pathophysiology, Diagnosis, and Management, 6e](#)

[Developmental Psychopathology](#)

[Saving Babies?: The Consequences of Newborn Genetic Screening \(Fieldwork Encounters and Discoveries\)](#)

[Cells \(Let's Relate to Genetics\)](#)

[Regulation of G Protein Coupled Receptor Function and Expression: Receptor Biochemistry and Methodology](#)

[Study Guide for Pathophysiology: The Biological Basis for Disease in Adults and Children, 6e](#)

[Astonishing Legends Statistical Methods in Bioinformatics \(Statistics for Biology and Health\)](#)

[Pathophysiology: A Clinical Approach](#)

[Pediatrics, 1e](#)